

### USEFUL WEBSITES

Gillespie County  
Texas 4-H  
Texas 4-H Center  
Quality Counts

<http://gillespie.agrilife.org>  
<http://texas4-H.tamu.edu>  
<http://texas4H-ctr.tamu.edu>  
<http://qualitycounts.tamu.edu>



## GILLESPIE COUNTY 4-H NEWSLETTER



95 Frederick Road, Fredericksburg, TX 78624  
Phone: 830-997-3452 Fax: 830-997-6378

November 2011

### FUNDRAISERS

#### WILD GAME DINNER

The Gillespie County Wild Game Dinner will be held Saturday, November 19, 2011 at the Gillespie County Fairgrounds. Doors open at 5:30pm. Tickets are \$20 each which includes dinner, drinks and door prize chance. This event helps support agriculture, youth education and rural living in the Hill Country. Gillespie County 4-H & FFA again will assist in cleanup throughout the evening. Club Managers should contact Shawn Lehne no later than Monday, November 7<sup>th</sup> for more information at [lehnes@beecreek.net](mailto:lehnes@beecreek.net) or (512)567-4682.

#### LONESTAR CATTLEMENS ASSOCIATION



The Lone Star Cattlemen Foundation is a buyer's group for youth livestock projects across the State. We'd love your support for our fundraising project that will help us purchase animals all across the

State, including the Gillespie County Youth Livestock Show and the Star of Texas Fair & Rodeo. A raffle will be held at the Star of Texas Fair & Rodeo for 1 2012 Dodge Ram truck and a Kawasaki ATV PLUS 25% comes back to your 4-H Club. Contact Shawn Lehne for more information.

### LIVESTOCK UPDATES

#### SWINE VALIDATION

The following dates have been set in November. You **MUST** make one of the validation dates to validate your swine projects to be able to show your animals at any of the 2012 stock shows.

- FREDERICKSBURG - Fairgrounds  
Tues, Nov. 8 from 3-6 pm
- HARPER - Show Barn  
Mon, Nov. 14 from 3-6 pm
- FREDERICKSBURG - Fairgrounds  
**DATE CHANGE!!!!**  
Mon, Nov. 21 from 3-6 pm



**If you have a major conflict, call the Extension Office ASAP.** Don't forget that a parent must accompany each exhibitor.

### STOCK SHOW ENTRIES

All livestock show entries have already started being accepted and will be due to the Gillespie County Extension Office no later than **Tuesday, November 15, 2011** at 5:00pm. **ALL 4-H members entering the Fort Worth Stock Show must have ALL stock show entries turned in no later than Tuesday, November 1, 2011.**

The Houston entries must be notarized and both the child and parent's signatures must be witnessed. If you are not able to come during these times due to a conflict, please contact Phylliss or Becky to make arrangements. **LATE ENTRIES WILL INCUR A LATE FEE PER EXHIBITOR - NO EXCEPTIONS!**



All fees and signatures must be in place for an entry to be considered valid. **The exhibitor's social security number must be on all forms.** Please do not assume that the Extension Office has your number! This is also the time to register for any of the "youth development" contests available at the major livestock shows. This includes Public Speaking, Skillathons, and Shootouts.

**Just because you validate your animal does not mean that it has been entered into the livestock shows! You must also pay an entry fee and complete additional paperwork!**

Extension set forth new policies several years ago for financial matters that affect all counties in the state of Texas. Only the secretaries in the Extension Office will be able to handle money. Micah, Brad and Shea will not be able accept your money. *Thank you for your patience!*

#### HARPER COMMUNITY STOCK SHOW

This is notification that the Harper Community will be held on December 17, 2011 at the Harper Show Barn instead of the first weekend in January. Please mark your calendars now!

#### RULES AND REGULATIONS

All livestock show rules will be available in the Extension Office or on the shows' websites. It is your responsibility to obtain a copy and know the rules! Please get a copy of the rules if you are showing.



## STOCK SHOW GRIEVANCE COMMITTEE MEETING

**Date:** Monday, November 28, 2011  
**Place:** Extension Office  
**Time:** 6:00pm



The Gillespie County Youth Livestock Grievance Committee will meet to listen to grievances against 4-H members not being able to show at the 2012 Gillespie County Youth Livestock Show in January.

All 4-H members that are ineligible will be receiving a letter in early November stating they are not eligible to show. You must contact the Extension Office and let us know that you will be attending the meeting. Also, if you received this letter and are not intending on exhibiting at the GCYLS, please disregard this letter.

## STOCK SHOW HOTEL RESERVATIONS



Parents! Now is a great time to start making hotel reservations for the 2011 Stock Show season. We encourage you to stay together. ***It is your responsibility to do this.*** Most stock shows provide us a list of nearby hotels and RV

parks. Please contact the Extension Office if you would like more information. Agents have stayed at the following locations for stock shows in the past. NO blocks have been made. This is just for your information.  
 Fort Worth - La Quinta (817)370-2700  
 Houston - Holiday Inn Medical Center (713)528-7744  
 San Angelo - San Angelo Inn (325)658-2828  
**YOU NEED TO SECURE HOTELS NOW! \*\***

## EXTRACURRICULAR ACTIVITIES: DRUG TESTING



Academically ineligible exhibitors will NOT be allowed to show their animals at ANY livestock show. This means No Pass, No Show!!! This includes Gillespie County, Hill Country District, Ft. Worth, San Antonio, San Angelo, Houston, or Austin. The animal may not be shown by anyone!!! *Please be aware that 4-H is recognized by the schools as an extracurricular activity and high school students may be subject to random drug testing as per school policy.*

## VALIDATION TAGS

If an animal has been validated for a livestock show with an ear tag and has lost it or torn it out, it will need to be replaced ASAP. Contact the Extension Office as soon as you notice it is missing so that a replacement can be ordered.



## November 2010 TURKEYS ARRIVE!



If you ordered turkeys for the 2012 livestock show season, they will be arriving on **Tuesday, November 1<sup>st</sup>** from College Station. Phone calls will be made after lunch to let you know what time they will arrive at the Extension Office. If you prefer for us to call you on your cell phone, please call the office and let Phylliss or Becky know.

## COUNTY BROILERS

County Broilers will be ready to pick up at the Extension Office on Wednesday, November 30<sup>th</sup>. If you have a new phone number or have a preference of who is called, please contact Becky or Phylliss so that they can make a note. Be sure to bring your own box to carry them home.



## 2011 LIVESTOCK SHOW SCHEDULES

Log onto our website at <http://gillespie-tx.tamu.edu> → Links → Major Livestock Shows. This will get you the latest information on each of the livestock shows. Not all shows have complete information at this time. Please continue to check because there are many changes this year.

## SAN ANTONIO SCHOOL TOURS

The San Antonio Stock Show & Rodeo is looking for enthusiastic, responsible students in the 9<sup>th</sup>-12<sup>th</sup> grades to take part in being tour guides for the School Tours. Tour dates are assigned on a first come, first serve basis. Please do not schedule to guide on a day that you will be sifting, classifying, or showing your animal(s). Students must commit to School Tours hours of 7:30am - 2:30pm on your scheduled day. Deadline for signing up is set for Monday, November 21<sup>st</sup>. This is an excellent way to build community service for scholarships!!! If you are interested in taking part in this unique experience, please contact Becky at the Extension Office.



## BEEF CATTLE SHOWMANSHIP CLINIC

**Date:** Monday, November 7<sup>th</sup>  
**Place:** Gillespie County Fairgrounds Show Barn  
**Time:** 6:00pm



A Beef Cattle Showmanship Clinic will be held for all those interested in learning more about working with their beef animals. Bring one beef animal per youth. Plan to arrive by 5:30pm. Cattle exhibitors will spend a majority of their time learning about showmanship and also learn about what to feed and how to feed their animals. Parents are strongly encouraged to attend with their child(ren). Prizes will be given. Questions? Contact Micah at the Extension Office.



## FOOD AND NUTRITION

### COUNTY FOOD SHOW

**Date:** Thursday, November 3, 2011

**Time:** Judging begins at 6:30pm

**Place:** Gillespie County Extension Office

**Entry Date:** Wednesday, October 19<sup>th</sup>

District Food Show - December 3<sup>rd</sup>



Please arrive prior to 6:30 to see your judging order. Also, bring a serving size of your recipe on a serving dish.

### GILLESPIE COUNTY FOOD CHALLENGE COMPETITION

**Date:** Wednesday, November 16, 2011

**Time:** Juniors - 5:00pm

Intermediates & Seniors - 5:45pm

**Place:** Gillespie County Extension Office



A Food Challenge competition will be

held to determine which teams will advance to the District 10 Food Challenge Contest in January. Please arrive 15-30 prior for supply box check-in. The awards presentation will take place around 7:15pm.

### S.A.L.E. FOOD CHALLENGE

The San Antonio Livestock Exposition will host the second Food Challenge at the 2012 San Antonio Stock Show & Rode. The contest will be held on Saturday, February 18, 2012. This contest is only open to the senior age division - youth with birthdates between September 1, 1992 and August 31, 1997

(ages 14 to 19). The format of the contest will be similar to the 4-H Food Challenge as it is conducted at Texas 4-H Roundup. Youth will participate in the Food Challenge as individuals. No team entries allowed! Entry fee is \$25 per person. Entries are due no later than Tuesday, November 15<sup>th</sup>.



### TEXAS 4-H RECIPE RALLY

Are you creative when it comes to following recipes? Then this is the contest for you! The Texas 4-H Recipe Rally will be held at the 2012 Texas 4-H Roundup. 4-H members are challenged to select, create and/or alter a recipe themed "Summer Snacks" and also submit a video that will be posted on YouTube. The recipe is recommended to be healthy or you may choose to alter the recipe to increase the nutritional value. If you are interested in participating, come by the Extension Office or visit <http://gillespie.agrilife.org> → Publications → 4-H for more information.



## November 2010 CLOTHING & TEXTILES

### READY TO SEW?

The McCall Pattern Company has given us the opportunity again to purchase select McCall & Butterick patterns for only 95¢. Simply come to the Extension Office and check out the photo gallery or visit [www.sewcoolinschool.com](http://www.sewcoolinschool.com) and click on Browse Patterns. There are 100+ patterns to choose from. Orders are due by Friday, December 16, 2011. Please call Becky at the Extension Office with your order.



### LEADERSHIP OPPORTUNITIES

#### COUNTY 4-H COUNCIL NOVEMBER MEETING

**Date:** Monday, November 21, 2011 @ 6-7pm

**Place:** Gillespie County Extension Office

Attention Club Presidents and Council

Delegates! Your club has elected you to represent them at a county level. This means you are **STRONGLY ENCOURAGED** to attend the County 4-H Council Meetings. This meeting is open to any 4-H member to attend. (It's just that Delegates and Presidents are the only ones that can vote!)



#### 4-H ADULT LEADERS ASSOCIATION NOVEMBER MEETING

**Date:** Monday, November 21, 2011 @ 7pm

**Place:** Gillespie County Extension Office

The Adult Leaders Association of

Gillespie County is open to any adult or volunteer with interest in bettering the Gillespie County 4-H Program. Please come and check it out!



#### JUNIOR LEADERSHIP RETREAT

Junior Leadership Retreat! It will be held November 11-13, 2011 at the Texas 4-H Conference Center in Brownwood, TX. Cost will be \$105 per youth and \$70 per adult. Registration includes two nights lodging, four meals, snacks and all program supplies. 2011 Retreat participants will engage on increasing knowledge and skills in Healthy Lifestyles, Food and Nutrition, Discover Scientific Method, Outdoor Challenge and Recreation Leadership. Registration will be conducted on the Texas 4-H Center website at <http://texas4hcenter.tamu.edu/> and opens on October 1st and ends on November. You must be at least 9 years old and no older than 14 as of August 31, 2011. Flyers are available at the Extension Office.



## COMMUNITY SERVICE PROJECTS

### one day 4-H

Gillespie County 4-H members took part in one day 4-H by collecting money for the Bastrop fire victims. We raised over \$1300! Also, the Harper & Headwaters 4-H Clubs held a canned food drive in the Harper community during National 4-H Week. They collected 761 canned food goods that were donated to the Harper Food Pantry. Thanks to all the 4-H members, adult volunteers and parents that made both of these events a success!



## SHOOTING SPORTS

### SHOOTING SPORTS PARENTS' MEETING

Date: Thursday, January 5, 2012

Time: 6:00pm

Place: Extension Office



This is a general meeting for PARENTS And Kids! Your attendance is important for this meeting. Topics that will be discussed will be practice times and practice locations. This meeting will also used to reserve practice slots on the practices dates decided that night. So if you want your child to have a lane to practice on PLEASE, PLEASE attend this meeting. Practices will be held on Mondays and Wednesdays beginning January 16<sup>th</sup>.

## OTHER 4-H NEWS

### RECORD BOOK WORKSHOP

That time of year again! Mark this date on your calendar! A district record book workshop will be held on Monday, November 14<sup>th</sup> at 6pm at the Kendalia Community Center in Kendalia, TX. There are several changes to the Record Book process this year. Record Book information is available online at <http://texas4-h.tamu.edu> → Youth → Record Books. To view the Record Book website, please visit <http://4hreports.com> for more information on how to create an account, instructional videos and FAQs.



November 2010

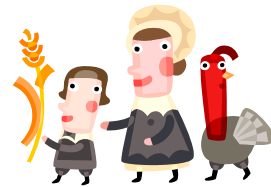
## 4-H CLUB NEWS

**Headwaters 4-H** - Will be meeting on Wednesday, November 9<sup>th</sup> at 6:30pm with the Harper 4-H Club.

**Hill Country 4-H** - Will be meeting on Monday, November 28<sup>th</sup> at 6:30pm. Please bring items for the District and State Community Service Projects.

CONTACT YOUR CLUB MANAGERS FOR MEETING DATES:

- Cross Mountain
- Heritage



*Brad Roeder*

Brad Roeder  
CEA - Ag & NR

*Shea Nebgen*

Shea Nebgen  
CEA - FCS

*Micah Walker*

Micah Walker  
CEA - 4-H & YD

# November 2011



Sun	Mon	Tue	Wed	Thu	Fri	Sat	
		<p>1 </p> <p>Turkeys Arrive</p> <p>Cave Creek 4-H 7pm St. Mary's 4-H 7pm Stonewall 4-H 7pm Willow Cr 4-H 6:30pm</p>	2	<p>3</p> <p>County Food Show</p> 	4	5	
6	<p>7 </p> <p>Doss 4-H 6:30pm Live Oak 4-H 7pm Beef Cattle Showmanship Clinic 6pm</p>	<p>8</p> <p>Swine Validation Fbg 3-6pm</p> 	<p>9 </p> <p>Country Creek 4-H 6pm Harper 4-H 6:30pm Headwaters 4-H 6:30pm</p>	10	<p>11</p> <p>Veterans Day</p> 	12	
13	<p>14 </p> <p>Swine Validation Harper 3-6pm Record Book Workshop—Kendalia</p>	<p>15</p> <p><i>DUE: Stock Show Entries</i></p> 	<p>16</p> <p>County Food Challenge Contest</p>	<p>17 </p> <p>Wrede 4-H 6pm</p>	18	<p>19</p> <p>GILLESPIE COUNTY <b>WILD GAME</b> DINNER</p>	
20	<p>21 SALE School Tours deadline</p> <p>Swine Validation Fbg 3-6pm </p> <p>County Council 6pm Adult Leaders 7pm</p>	22	23	<p>24</p>  	<p>25</p> 	26	
27	<p>28 </p> <p>Hill Country 4-H 6:30pm Grievance Committee Meeting 6pm</p>	29	<p>30</p> <p>Broilers Arrive</p> 	<p>Contact Your Club Managers for Meeting Dates Cross Mountain Heritage</p>			