

Agriculture & Natural Resources



GILLESPIE COUNTY

SUMMER 2019

Gillespie County Extension
95 Frederick Rd.
Fredericksburg, TX 78624
Phone: 830-997-3452
gillespie.agrilife.org

UPCOMING EVENTS

***WMAA—Wildlife Management Area Association**
July 13

Hay Show Deadline
August 5

TX Sheep & Goat Expo
August 16 & 17

4-H BBQ Fundraiser
August 23

Gillespie County Fair
August 22-25

**Indicates that CEU's will be offered at event*

INSIDE THIS ISSUE:

WMAA—Wildlife Mtg Area Assoc 1

Hay Show 2

State Pecan Show 2

GCAC Info 3

TX Dept of Ag 3

Gillespie County 4-H 4

Gillespie County Fair 4

TX Sheep & Goat Expo 5

Holiday Schedule 6



2019

WMAA SIGN-UP MEETING

CAVE CREEK, CHERRY SPRINGS,
HARPER, & DOSS

Where new and current WMAA members across Gillespie County come together to build relations, strengthen management practices, & achieve common goals.

Membership Dues

\$25

Bill Miller BBQ

- Non-Members - \$10
- Members - By Donation

CEU

2 General Hours

For more information, please call the Gillespie Extension Office at 830-997-3452
95 Frederick Rd, Fredericksburg, TX 78624

July 13, 2019 / 4pm
.....

RSVP

By July 1st
Gillespie Extension Office
830-997-3452

Gillespie Farm Bureau Center

237 Equestrian Drive
Fredericksburg, TX 78624

Speakers Include:

- Joyce Moore-TPWD
- Brad Roeder-Harvest Reports
- Dr. Maureen Frank-TAMU Wildlife Specialist

Texas A&M AgriLife Extension provides equal opportunities in its programs and employment to all persons, regardless of race, color, sex, religion, national origin, disability, age, genetic information, veteran status, sexual orientation, or gender identity.

The Texas A&M University System, U.S. Department of Agriculture, and the County Commissioners Courts of Texas Cooperating.

Individuals who require an auxiliary service to participate must notify the Extension Office at 830-997-3452 by June 13th, 2019.



2019 Gillespie County Hay Show

Remember to submit a hay bale for this year's Hay Show. Entries consist of a complete bale, which must be tagged with the type of hay, exhibitor name, address, & phone number. The entries will be separated into two divisions:

*Annual Grasses &
Perennial Grasses*

Round bales must be delivered to Beyer Fertilizer & Feed, located at 3446 N State Hwy 16. Square bales can be dropped off at Allied Ag Services in Stone-wall, Behrends Feed & Fertilizer in Luckenbach, or Lochte Feed & General Store in Fredericksburg.

**Samples need to
be submitted by
August 5th at the
listed locations.**



Texas Pecan Growers Annual Conference



- * July 14-17, 2019
- * Texas Pecan Growers Annual Conference & Trade Show
- * Embassy Suites Hotel & Conference Center
- * Frisco, TX
- * <https://uspecans.org/texas-pecan-growers-annual-conference-and-trade-show/>

Gillespie County Agricultural Commodity Association Membership Information



The primary objective of the GCACA is to control predators (coyotes, fox, bobcats and feral hogs) to protect domestic animals, desirable wildlife and birds, prevent damage to field crops, eliminate the outbreak of diseases associated with controlled predators, and reduce pollution of the county's water resources.

Who can become a member? Landowners in Gillespie County or anyone wanting to support the objectives of the Gillespie County Agricultural Commodity Association. Yearly dues are 20 cents per acre or a minimum of \$75.00, whichever is greater.

Starting June 19, 2019—Predators will only be accepted on the 2nd & 4th Wednesdays of each month.

Time: 11:00am—1:30pm.

The annual meeting is in October and the year runs from October 1 through September 30.

More info to come in our fall newsletter.



To apply for membership, please come by the Extension Office, 95 Frederick Rd, and complete the membership form and pick up a packet.

Texas Dept of Agriculture

A message from TDA Commissioner Sid Miller-

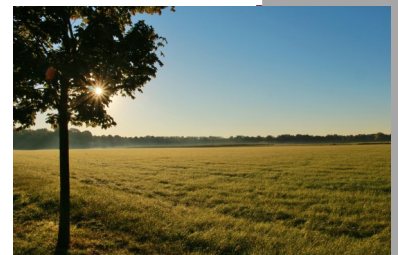
The Family Land Heritage Program

The Family Land Heritage Program is a recognition that honors families who have owned and operated a continuous agricultural operation for 100 years or more. Every year TDA hosts a ceremony at the Texas State

Capitol to celebrate and commemorate the families who have passed down their proud Texas legacy from generation to generation.

Is your family land more than 100 years old?
Check out their website here:

<https://www.texasagriculture.gov/NewsEvents/FamilyLandHeritage.aspx>



Gillespie County 4-H



Join us for our 4-H BBQ Fundraiser - Fair Friday!

More info coming soon.
Check out our website and local
newspaper for more details.

Gillespie County Fair



Mark your calendar for the *131st Gillespie County Fair!*

<http://www.gillespiefair.net/>

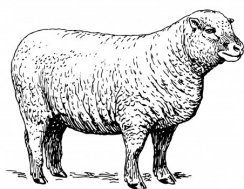
**Thursday through Sunday
August 22 – 25, 2019**

Join us for a weekend of Texas Hill Country and Gillespie County hospitality that the whole family will enjoy. It's four big days filled with great events—exciting carnival and midway, your favorite fair food, livestock judging, agricultural and household exhibits, arts and crafts, washer pitching tournament, antique tractor shows, and live pari-mutuel horse racing!

Friday and Saturday night brings out the Stars! And, don't forget the Parade downtown on Friday morning!!!

You'll Love it!





Texas Sheep & Goat Expo

August 16th & 17th

**Deadline to Register is
August 13th!**

SAN ANGELO — The Texas A&M AgriLife Research and Extension Center in San Angelo has announced the schedule for the Texas Sheep and Goat Expo and the 46th annual Sheep and Goat Field Day.

The two events historically attract participants nationwide and are the country's largest sheep and goat events, said Robert Pritz, AgriLife Extension regional program leader, San Angelo.

The free field day will be Aug. 16 from 8-11:30 a.m. at the AgriLife center, 7887 U.S. Highway 87 N., San Angelo.

The field day will include the dedication of the sheep statue, Ms. TAM "Ewe"niversity, at the entrance to the center. Ms. TAM "Ewe" is one of the sheep statues of San Angelo, a community project to celebrate the city's past as "the wool capital of the world."

The Sheep and Goat Expo will begin afterward, kicking off with a noon lunch at the Spur Arena at 200 W. 43rd Ave., San Angelo.

"Each year we try to provide producers with basic sheep and goat production information, while at the same time introducing new topics and the latest industry updates," said Pritz.

The Sheep and Goat Expo will run from noon-8:30 p.m. on Aug. 16, and 7 a.m.-3 p.m. on Aug. 17.

The cost of the expo is \$50 for adults and \$30 for children. Lunch and dinner on Aug. 16 and breakfast and lunch on Aug. 17 are included in the price.

The registration deadline is Aug. 13. To register online and for additional Texas Sheep and Goat Expo registration and event information, visit <https://agriliferegister.tamu.edu/productListingDetails/2876>

This year's expo will feature a special practicum session that will provide hands-on demonstrations of some production practices all producers, new and old, can incorporate into their operations, Pritz said.

The featured keynote speaker on Aug. 16 will be Benny Cox, American Sheep Industry president, San Angelo. Day one will also feature sheep and goat industry updates from a variety of experts and an educational sheep and goat carcass evaluation.

Concurrent sessions will take place in the late afternoon and include: business and marketing; health and management; wildlife compatibility with sheep and goats; and integrative crop and livestock systems.

On Aug. 17, Dr. John Nielsen-Gammon, Texas state climatologist, College Station, will take the stage as the keynote speaker. Other activities will include a performance-oriented sheep and goat sale and the Texas Lamb Breeders Association board meeting.

Concurrent session topics on day two will focus on: youth, hair sheep, wool sheep, club lambs, angora goats and meat goats.

Please Note! Our office will be closed on the following dates:

- * July 4th—Independence Day
- * August 23—Gillespie County Fair
- * September 2—Labor Day



**Texas A&M AgriLife
Extension Service—Gillespie
County**

95 Frederick Rd.
Fredericksburg, TX 78624
Phone: 830-997-3452
Fax: 830-997-6378
Email: gillespie-tx@tamu.edu
Website: [http://
gillespie.agrilife.org](http://gillespie.agrilife.org)

Office Personnel:
Carly Jenkins
Donna Maxwell

**Gillespie County Extension
Agents**

Brad Roeder is the Ag & Natural Resources (ANR) CEA which encompasses hay production, wildlife management, predator control, farming, lawn care, gardening, pest management, CEU's, livestock production, water conservation, brush management, and economic development.

Beth McMahon is the Horticulture agent who works alongside Gillespie County residents and business owners with plant and pest related inquiries.

Shea Nebgen is the Family and Consumer Health (FCH) Agent who provides programming in areas like nutrition, sewing, food safety, child safety seats, and healthy living.

Taylor Osbourn is the 4-H & Youth Development Agent who oversees the 4-H program as a whole in Gillespie county.