

# Agriculture & Natural Resources

GILLESPIE COUNTY

FALL 2019

## UPCOMING EVENTS

### \*Wildlife Field Day

September 17

### \*Fall Range Tour

September 17

### \*GC Commodity

Assoc Meeting

October 10

### GC Pecan Show

November 22

~ Check out our new  
Fun Facts Page! ~

\*Indicates that CEU's will be  
offered at event

## INSIDE THIS ISSUE:

Fall Range Tour	1
TSCRA	2
Hay Show reminder	2
Axis Deer Tissue	2
GC Wild Game Dinner	3
Pecan Show	3
Bennett Trust	4
Birding the Hills	4
Heifer Show/Sale	5
WMAA Info	5
GCACA Info	6
Fun Facts-Coyotes	7
CEU's	7
Wildlife Field Day	7
Upcoming Programs	8
Holiday Schedule	9

# 2019 FALL RANGE TOUR

September

17

Location:

St Paul Lutheran Church -

Cave Creek

9732 FM 1631,

Fredericksburg, TX

Time: 5:30pm - 7:30pm

2 CEU Hours -

1 IPM

1 General

Program:

Dr. Reagan Noland; Assist Professor & Extension Agronomist



Topics Included:

Small Grain Program

Agronomy Program

Weed control in oats

Upping protein in wheat

Grain for grazing & food plots

~ Cost is \$10 - payable on site. ~

(check or cash only) No meal provided.

Please call (830) 997-3452 for more info.

Texas A&M AgriLife Extension provides equal opportunities in its programs and employment to all persons, regardless of race, color, sex, religion, national origin, disability, age, genetic information, veteran status, sexual orientation, or gender identity. The Texas A&M University System, U.S. Department of Agriculture, and the County Commissioners Courts of Texas Cooperating

Made with PosterMyWall.com

## Texas & Southwestern Cattle Raisers Association



- **October 3, 2019**
- 5:30 pm - 8:00 pm
- Gillespie County Fairgrounds, Fredericksburg TX
- Update on TSCRA activities & other issues facing ranchers
- Register at [tscra.org](http://tscra.org) or call 800-242-7820 ext. 192
- A free beef dinner will be served.
- Everyone is welcome!
- [www.tscra.org](http://www.tscra.org)



**Texas and Southwestern  
Cattle Raisers Association**  
To Honor and Protect the Ranching Way of Life

### Hay Show Entry Reminder:

Please remember to pick up your hay bales by September 20!

Beyer Feed & Fertilizer -  
3446 N State Hwy 16, Fredericksburg TX

Call the Gillespie County Extension Office  
for any questions.  
830-997-3452



### Axis Deer Tissue Collection

Wildlife researchers from the Department of Natural Resources Management at Texas Tech University are seeking tissue samples from harvested free-ranging axis deer.

Please visit our website [gillespie.agrilife.org](http://gillespie.agrilife.org) for the full article or contact Joyce Moore 830-285-0872 or Matt Buchholz 715-204-8680 for additional information.



## Gillespie County Wild Game Dinner

This year's Wild Game Dinner will be held on **November 23, 2019.**

Evening of wild game appetizers, beverages, games, live auction, raffle, & silent auction supporting agriculture, youth education, & rural living in the Texas Hill Country.



Located at the Gillespie County Fair Grounds.

5:30pm—10:00pm

\$25 a person includes dinner, drinks, & door prize chance.

For more information please call (830) 997-5508.



## Gillespie County Pecan Show



- \* **November 22, 2019**
- \* Entries due November 20; NOON
- \* Pecans will be judged based on weight, kernel size & shape, damage/disease presence, & color
- \* Categorized according to variety
- \* Pecans must be from the 2019 crop

*~Call the  
Gillespie  
County  
Extension  
Office for  
additional  
information.  
830-997-3452*

## Additional Agriculture Programs

### **Bennett Trust Stewardship**

September 30—October 1

Upcoming Event - “Tips of the Trade”

Bennett Trust Land Stewardship

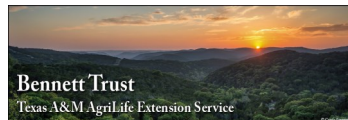
Women’s Conference

The Inn on Barons Creek - Fredericksburg TX

Covering issues such as brush control, prescribed burning, estate planning, water management and livestock stocking rates.

830-990-9202

<https://agrilife.org/bennetttrust/>



### **Birding the Hills**

October 7-11

Three full days of birding in the  
Edwards Plateau ecoregion!

Full of birding on both public lands and private ranches in a  
variety of habitats in the Texas Hill Country!



\*Birding and Bird Watching: Contributions to Our Conservation Legacy -  
by Romey Swanson, Audubon Texas

\*Back (yard) 40: Managing Songbirds on Lands Large and Small -  
by Dr. Maureen Frank, AgriLife Extension

\*Beef, Birds, and Butterflies: Sustainable Coexistence in an Agroecosystem -  
by Dr. John Tomecek, AgriLife Extension

\*Land Management at the Kerr Wildlife Management Area - Ryan Reitz, TPWD

Visit [valverdeextension.ticketleap.com/birding-the-hills-2019](http://valverdeextension.ticketleap.com/birding-the-hills-2019)  
to register.



## Additional Agriculture Programs/Info Cont.

### **Hill Country Youth Commercial Heifer Show & Sale**

October 24

Jordan Cattle Auction - San Saba, TX

Check out our website for additional information under the  
Events tab.



### **~Attention all WMAA landowners:~**

Be on the look out for the notice of when your  
harvest books will be ready.

They should be ready about mid **October.**

If you are expecting bow hunters, please call our office and ask for  
Donna. She can make a generic harvest book for you  
until your license is ready.

### **WMAA Organization Meeting Dates Set:**

Cave Creek - **October 22**

Cherry Spring - **October 24**

Doss - **October 19**

Harper - **October 26**



# Gillespie County Agricultural Commodity Association Membership Information



The primary objective of the GCACA is to control predators (coyotes, fox, bobcats and feral hogs) to protect domestic animals, desirable wildlife and birds, prevent damage to field crops, eliminate the outbreak of diseases associated with controlled predators, and reduce pollution of the county's water resources.

## Who can become a member?

Landowners in Gillespie County or anyone wanting to support the objectives of the Gillespie County Agricultural Commodity Association. Yearly dues are 20 cents per acre or a minimum of \$75.00, whichever is greater.

Predators (coyotes, fox, bobcats, & hogs) will only be accepted on the 2nd & 4th Wednesdays of each month. ~95 Frederick Rd, FBG TX~

Time: 11:00am—1:30pm.

The annual meeting is in October and the year runs from October 1 through September 30.

**Save the date:**  
**October 10, 2019**  
**Annual Meeting**  
**237 Equestrian Dr,**  
**Fredericksburg, TX**



To apply for membership, please come by the Extension Office, 95 Frederick Rd, and complete the membership form and pick up a packet.  
830-997-3452

Share  
with  
the  
kiddos  
or  
grand-  
kiddos

## Fun Facts - Coyotes

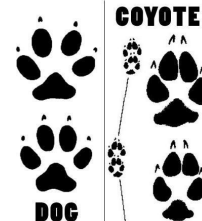
### Did You Know:

- ⇒ There are 19 subspecies of coyote.
- ⇒ Coyote is native to western North America, but now extends throughout North and Central America, ranging in the north from Alaska and all but the northernmost parts of Canada, south through the continental United States and Mexico, and throughout Central America to Panama.

[www.justfunfacts.com](http://www.justfunfacts.com)

- ⇒ Coyotes breed annually between January & March. Pups are born 60 to 63 days later. A typical litter has four to seven pups.
- ⇒ Other common names include: prairie wolf, brush wolf, God's dog, song dog

The Texas A&M University System - Predator Control as a Tool in Wildlife Management Publication



## CEU Opportunities:



Sep 17 - Fall Range Tour-2 hrs  
Sep 17 - Wildlife Field Day (Brady)-3 hrs  
Dec 19 - 5 hr CEU Course

## Wildlife Field Day (Brady)

### Wildlife Field Day

September 17, 2019

Gillespie Llano Mason Menard McCulloch

Location: Heart of Texas Whitetails  
 755 PR 922 Brady Texas 76825



RSVP Deadline: Tuesday, Sept. 10

Cost: \$25

Registration: 8:30 - 9:00 am

Join us on September 17 for the Wildlife Field Day with topics including Wild Turkeys, Low and High Fence Feed Programs, Deer Pen Tour, Beneficial & Problem Plants for Wildlife and more!

3 CEU's will be offered and lunch will be provided.

The program will begin at 9 a.m. and close with evaluations and CEU handouts at 3:00 p.m.

To RSVP & payment, contact your local AgriLife Extension

Office:

Gillespie: 830.997.3452

Mason: 325.347.6459

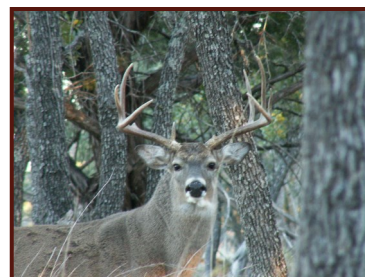
Llano: 325.247.5159

McCulloch: 325.597.1295

Menard: 325.396.4787

Texas A&M AgriLife Extension provides equal opportunities in its programs and employment to all persons, regardless of race, color, sex, religion, national origin, disability, age, genetic information, veteran status, sexual orientation, or gender identity.  
 The Texas A&M University System.

**TEXAS A&M**  
**AGRI LIFE**  
**EXTENSION**



## Upcoming Horticulture Programs

For more information about these programs, please contact Beth McMahon at the Gillespie County AgriLife Extension Office at 830-997-3452.

### Grow It Cook It: Cauliflower Program

September 6<sup>th</sup>

Cauliflower used to be that boring vegetable that was boiled, dabbed with butter and salt, and set on the table with mild enthusiasm. It's not anymore! Come join us for the Grow It Cook It: Cauliflower program, a complete garden to table experience that will cover how to grow your own cauliflower and cook it in your kitchen too! This program will be taught by Family and Community Health Agent Shea Nebgen and Horticulture Agent Beth McMahon.



### Adult Plant Identification Program

September 14<sup>th</sup>

Ever seen a plant and wondered, "What is that?". Or used a plant identification app and it came up with "Texas Bluebonnet" for a shrub? Come join Bill Lindemann with the Friends of the Fredericksburg Nature Center and Beth McMahon with Gillespie County AgriLife Extension for a "What is that?" public plant identification walk on Saturday, September 14<sup>th</sup>, 2019 in Lady Bird Johnson Municipal Park. The walk will start at 9:00 am and last approximately two hours. Participants are asked to bring their own water and wear good walking shoes. The walk will start near Pavilion One.



### "Sign-ups Open for Junior Gardeners Program"

September 9<sup>th</sup>

Do you have a child interested in gardening or insects? Sign them up for the Gillespie County Junior Gardener program. The program will meet on Mondays from 4:30-5:30 at the Gillespie County Extension Office, starting on September 9<sup>th</sup> and go until November 4<sup>th</sup>, 2019. Kids will get to plant and tend a garden. Lessons themed around insects are included. Please see <https://gillespie.agrilife.org/4h/junior-master-gardener/> for a draft schedule. The program is limited to ten kids, so sign up soon. The cost for this program is \$15.



### Kolaches and Conservation Fall Edition

September 17<sup>th</sup>

8:30 am -10:30 am, Gillespie County Extension Office, Fredericksburg.

Come in, drink some coffee, eat a kolache and ask us questions. Representatives from Natural Resources Conservation Service, Hill Country Alliance, Texas Parks and Wildlife and the Ag & Horticulture Extension Agents will be there. Free (including the kolaches).





Please Note! Our office will be closed on the following dates:

- \* November 11 - Veterans Day
- \* November 28 & 29 - Thanksgiving
- \* December 23, 24, & 25 - Christmas
- \* January 1, 2020 - New Years Day



**Texas A&M AgriLife  
Extension Service  
~ Gillespie County ~**

95 Frederick Rd.  
Fredericksburg, TX 78624  
Phone: 830-997-3452  
Fax: 830-997-6378  
Email: [gillespie-tx@tamu.edu](mailto:gillespie-tx@tamu.edu)  
Website: [http://  
gillespie.agrilife.org](http://gillespie.agrilife.org)

Office Personnel:  
Carly Jenkins  
Donna Maxwell

**Gillespie County Extension  
Agents**

Brad Roeder is the Ag & Natural Resources (ANR) CEA which encompasses hay production, wildlife management, predator control, farming, lawn care, gardening, pest management, CEU's, livestock production, water conservation, brush management, and economic development.

Beth McMahon is the Horticulture agent who works alongside Gillespie County residents and business owners with plant and pest related inquiries.

Shea Nebgen is the Family and Consumer Health (FCH) Agent who provides programming in areas like nutrition, sewing, food safety, child safety seats, and healthy living.

Taylor Osbourn is the 4-H & Youth Development Agent who oversees the 4-H program as a whole in Gillespie county.