



Agriculture & Natural Resources

UPCOMING EVENTS

GROW IT, COOK IT - BEETS

October 1, 2021

LIVESTOCK GUARDIAN DOG FIELD DAY*

October 8, 2021

FREDERICKSBURG RANCH GATHERING

October 5, 2021

FALL RANGE TOUR*

October 14, 2021

GILLESPIE COUNTY AGRICULTURAL COMMODITY ASSOCIATION ANNUAL MEETING

October 21, 2021

RIPARIAN STEWARDSHIP WORKSHOP

October 21, 2021

5 HOUR CEU COURSE*

November 16, 2021

WILD GAME DINNER

November 20, 2021

GILLESPIE COUNTY PECAN SHOW

December 9, 2021

GILLESPIE COUNTY LIVESTOCK SHOW & SALE

January 6-8, 2021

*indicates that CEU's will be offered at event

LATE FALL 2021 GILLESPIE COUNTY

INSIDE THIS ISSUE

WMAA MEETING UPDATES

Harvest Books & Meeting Schedule - Page 2

GILLESPIE COUNTY HAY SHOW

Contest Results - Page 2

AGRICULTURE PROGRAMS

Livestock Guardian Dog Field Day - Page 3

Fredericksburg Ranch Gathering - Page 3

Fall Range Tour - Page 3

GCACA Annual Meeting - Page 4

5 Hour CEU Course - Page 4

Wild Game Dinner - Page 4

HORTICULTURE PROGRAMS

Grow It, Cook It (Beets) - Page 5

10th Annual Texas Fruit Conference - Page 5

Gillespie County Pecan Show - Page 5

Riparian Stewardship Workshop - Page 6

EXTRA INFORMATION

9th Annual Jacob Krebs Memorial Youth Hunt - Page 6

Brand Registration - Page 7

Hill Country Youth Commercial Heifer Show & Sale - Page 7

Uses for Fall Leaves - Page 7

OFFICE INFORMATION

Holiday Calendar & Office Contact Information - Page 8

WMAA MEETING UPDATES

Harvest books are ready!

Emails and post cards have been sent out with information regarding your upcoming meeting. Harvest books and deer spotlight numbers will be handed out at this meeting, so be sure to attend! For more information, please contact the Gillespie County Extension Office at (830) 997-3452 or speak with your WMAA Officer(s).

MEETING SCHEDULE

Cave Creek - Sunday, October 17, 2021

Harper - Friday, October 22, 2021

Cherry Spring - Thursday, October 28, 2021

Doss - Saturday October 30, 2021



2021 GILLESPIE COUNTY HAY SHOW

The purpose of the Gillespie County Hay Show is to provide educational information on forage quality for producers and buyers. This year, a total of 42 entries were submitted with 13 Annual Grass entries and 29 Perennial Grass entries.

The Grand Champion Annual winner was Addison Hahn with a Sudangrass entry and the Reserve Grand Champion Annual winner was Betty Hahn with a Sudangrass entry.

The Grand Champion Perennial winner was Karen Beyer with a Coastal entry and the Reserve Grand Champion Perennial winner was Colton Moore with a Coastal entry.

Congratulations to our winners this year!

AGRICULTURE PROGRAMS

LIVESTOCK GUARDIAN DOG FIELD DAY

The Field day will include a ranch tour, workshops, dog breeders, exhibits, and a producer panel. Lunch will be provided courtesy of Capital Farm Credit. 2 general CEU hours will also be offered at this program.

To preregister, contact the Gillespie County Extension Office at (830) 997-3452 or via email: donna.maxwell@ag.tamu.edu

October 8, 2021 from 8:00 a.m. to 4:00 p.m.

\$25 single / \$40 couple by Oct 1st or \$30 single / \$50 couple at door.

Checks or cash only (No cards accepted).

Please make checks payable to Gillespie ANR Committee.

Roeder Ranch, 6918 White Oak Rd, Fredericksburg, TX 78624.



FREDERICKSBURG RANCH GATHERING

The TSCRA Ranch Gathering will be held on Tuesday, October 5, 2021 from 6:00 p.m. to 7:30 p.m. at the Vista Oaks Event Center and is free for everyone to attend. Join for an evening of fun, food, and fellowship. Learn about the cattle business, hear updates from TSCRA, connect with new & old friends, and enjoy a great beef meal!

BRING A FRIEND

Non-members who join during the event will receive a free TSCRA metal gate sign worth \$45 courtesy of Corteva Agriscience.

Space is limited! RSVP by October 3, 2021 by emailing events@tskra.org

Vista Oaks Event Center, 8192 US-290, Fredericksburg, TX 78624



Sponsored by:

Elanco, Arrowquip, Capital Farm, Credit, Livestock Nutrition Center, Nutrition Plus, Texas Department of Agriculture

FALL RANGE TOUR - HAYLAGE

Dr. Larry Redmon will discuss haylage along with a demonstration of equipment by local producers. Haylage is silage made from grass which has been partially dried and wrapped to get proper fermentation by excluding air.

2 general CEU hours will be offered at \$10 per person. No RSVP is needed. Please contact the Extension Office at (830) 997-3452 for more information. Thursday, October 14, 2021 from 5:30 p.m. to 7:30 p.m. Located by the turkey barns at Behrends Feedlot

Directions

Turn South off of FM 1376 onto Grapetown Rd, go down 1.7 miles, turn right onto Sunday House Road, turkey barns will be located on the right. Physical Address: 1641-1707 Grapetown Rd, Fredericksburg, TX 78624



AGRICULTURE PROGRAMS

GILLESPIE COUNTY AGRICULTURAL COMMODITY ASSOCIATION ANNUAL MEETING

The GCACA Annual Meeting will be held on Thursday, October 21, 2021 at the Farm Bureau Pape Event Center located at 237 Equestrian Drive, Fredericksburg, TX 78624. Membership registration will begin at 4:30 p.m. with a BBQ meal following at 5:30 p.m. Door prizes will be available to those who attend. Guest speakers from Texas Parks and Wildlife.

For more information, please contact the Gillespie County Extension Office at (830) 997-3452.



Who can become a member? Landowners in Gillespie County or anyone wanting to support the objectives of the GCACA. Yearly dues are 20 cents an acre or a minimum of \$75.00, whichever is greater. To apply for a membership, please come by the Extension Office and pick up a membership form.

Predator (coyote, red fox, bobcat, and feral hog) tails will only be accepted on the 2nd and 4th Wednesdays of each month from 11:00 a.m. to 1:30 p.m. at the Gillespie County Extension Office located at 38 Business Ct, Fredericksburg, TX 78624.



To register please call the Gillespie County Extension Office at (830) 997-3452 by 5:00 p.m. on November 15, 2021.

Cash or Check only. Please make checks payable to Gillespie ANR Committee. Payment is requested ahead of time.

5 HOUR CEU COURSE

The Gillespie County AgriLife Extension Office will be hosting a 5 hour CEU course for Structural and Ag Non-Commercial and Commercial Pesticide Applicator License holders on Thursday, November 18, 2021 at the Gillespie County Extension Office, located at 38 Business Ct, Fredericksburg, TX 78624.

Registration will begin at 8:00 a.m. and the course will conclude by 3:00 p.m. The cost for the class is \$75, which includes lunch and morning refreshments. The guest speakers will discuss lawn care and management practices, rodent and bird management, and more related topics.

GILLESPIE COUNTY WILD GAME DINNER

This year's Wild Game Dinner will be held on November 20, 2021. Evening of wild game appetizers, beverages, games, live auction, raffle, & silent auction supporting agriculture, youth education, & rural living in the Texas Hill Country.

Doors will open at 5:30 p.m. at the Gillespie County Fair Grounds. Cost will be at \$25 per person which includes dinner, drinks, & a chance to win door prizes. For more information, please call (830) 997-5508.



HORTICULTURE PROGRAMS

GROW IT, COOK IT - BEETS

Come learn how to both grow and cook beets with your Family & Community Health agent, Shea Nebgen, and your horticulture agent, Beth McMahon!

The Gillespie County AgriLife Extension Office will be hosting the last program of the Grow It, Cook It Series on Friday, October 1, 2021. Cost is \$15 per person. The class will start at 12:00 p.m. and will conclude by 1:00 p.m. We are located at 38 Business Ct, Fredericksburg, TX 78624.

For more information call the Extension Office at (830) 997-3452 or email elizabeth.mcmahon@agnet.tamu.edu.



10TH ANNUAL TEXAS FRUIT CONFERENCE

Join us for the Taste of Texas fruit reception! The Texas Fruit Conference supports the unique challenges and opportunities for growing perennial fruit in Texas by bringing people together. This conference will be held on October 11th & 12th from 8:00 a.m. to 5:00 p.m. at the City of New Braunfels Civic Convention Center located at 375 S. Castell Ave. New Braunfels, TX 78130. Texas pesticide license CEU's will be offered, amount to be determined.

For more information or to register use the following link:

tx.ag/TXFruitConfReg

Intro to Fruit Growing Workshop - \$55
(1/2 day, 1 lunch, and fruit reception)

Main Conference - \$90
(1.5 days, 2 lunches, and fruit reception)

Workshop & Main Conference - \$125
(2 days, 2 lunches, and fruit reception)



GILLESPIE COUNTY PECAN SHOW

The Gillespie County Extension Office is pleased to announce the 2021 Gillespie County Pecan Show on December 9, 2021. Please bring your entry of 40-42 pecans grown by you this year in Gillespie County in a brown paper bag to the Extension Office located at 38 Business Ct. Fredericksburg, TX 78624 by noon on December 8, 2021.

Your pecans will be judged based on weight, kernel size/shape, damage/disease presence, uniformity, and color. The champions from the natives, classic/new, and commercial divisions will be awarded plaques. Finalists from the county show will move on to the Central Texas Regional Pecan show in early January. Finalist from this competition will move onto the state competition in June 2022.



HORTICULTURE PROGRAMS

RIPARIAN STEWARD WORKSHOP

On Thursday, October 21st, Hill Country Alliance will be hosting a free riparian workshop for streamside landowners at the LBJ State Park in Stonewall at 8:30 a.m. We will discuss riparian function, hydrology, stewardship and best practices; in the afternoon, we will visit nearby site along the Pedernales River to demonstrate riparian concepts and identify vegetation. This is the first of a three-part series designed to share practices and hands-on skills with streamside landowners to help you enhance and protect your property and the river. It is free of charge, includes a light lunch, and will feature Steve Nelle. The Hillside Stewardship: Understanding and Managing Erosion program will be held on October 23rd in Albert, TX. For more information, please contact Daniel Oppenheimer with Hill Country Alliance.



To register for this event please visit the following link
<https://bit.ly/HCARiparian1021>

EXTRAS

9TH ANNUAL JACOB KREBS MEMORIAL YOUTH HUNT

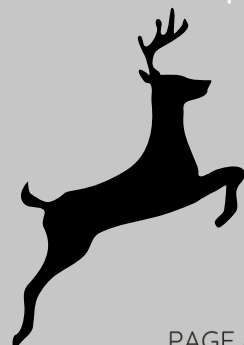
"Quality time in a deer blind and a lot more!"

This event is to honor Jacob Krebs who drowned on March 26th, 2013, while training for his Navy S.E.A.L. contract. Jacob loved the outdoors and loved his country. This special youth hunt weekend honors the children of Wounded and Fallen Warriors or Special Ops. This hunt will cost \$150 (meals and insurance) and will be located in Harper, TX from January 14-16th, 2022. Educational opportunities during the hunt weekend include: Learning about hunter safety and laws, whitetail deer anatomy, how to process game, how to make sausage, enjoying the shooting range, ethical hunting, land and wildlife management, and conservation and stewardship.



This event is sponsored by the Krebs Family, The Texas Youth Hunting Program, Fredericksburg Salutes Our Wounded Warriors, and the Harper Wildlife Management Association. For more information contact Hunt Master Will Krebs at krbeslaser@yahoo.com or (830) 669-2860. Apply at <http://texasyouthhunting.com/>

Youth must be accompanied by an adult, have a valid Texas Hunting License, and must have completed Hunter's Education.



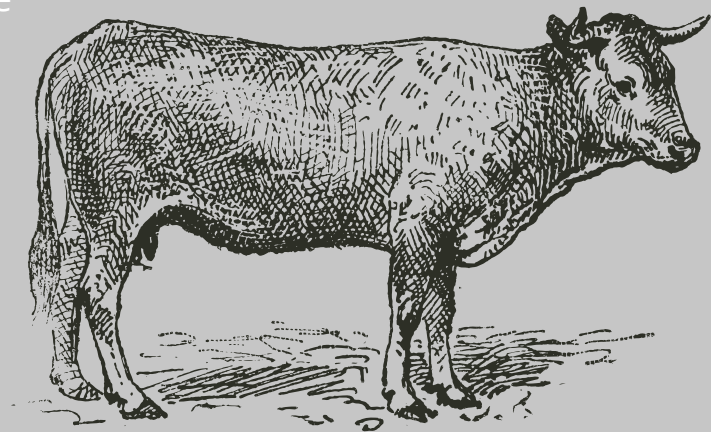
BRAND REGISTRATION

In Texas, if a livestock owner uses brands, earmarks, tattoos, or electronic devices to mark their cattle, hogs, sheep, goats, or horses; they must register the brands with their county clerk. Every 10 years, all livestock & horse brands throughout the state expire. For the state of Texas, brands expired in August of this year and must be renewed. Brand holders will have 6 months, through Monday, February 28, 2022 to renew their brand registration in each county where they have livestock.



2021 HILL COUNTRY YOUTH COMMERCIAL HEIFER SHOW AND SALE

Participants from seven counties commit and dedicate 6 months to raise three commercial female heifers. Throughout this experience they learn about the dynamics of the beef cattle industry including all aspects of animal husbandry, estrus synchronization, genetics, problem solving, recordkeeping, and marketing. The heifers will be shown on October 20th at the Jordan Cattle Auction with the sale taking place on October 21st at the Jordan Cattle Auction. Heifers must have been entered before April 1st to compete.



For more information, please call Micah Walker at (903) 439-5935 or visit <https://gillespie.agrilife.org/4h/gillespie-county-youth-commercial-heifer-show-sale/>

USES FOR FALL LEAVES

The fun of fall weather, fall gardening and running through the leaf pile poses the challenging question: what to do with your fall leaves after the fun? Here are some useful tips for ways to put your fallen leaves to good use!

1. Mow the leaves into the lawn to act as a slow release fertilizer
2. Collect and mulch the leaves to prevent erosion and evaporation
3. Use the leaves as compost to create a nutrient rich mix



OFFICE INFORMATION

PLEASE NOTE THAT THE EXTENSION
OFFICE WILL BE CLOSED ON THE
FOLLOWING DATES:

November 11, 2021 - Veterans Day

November 25-26, 2021 - Thanksgiving

December 24 & 27, 2021 - Christmas

December 31, 2021 - New Years Eve

SORRY! WE'RE
CLOSED

TEXAS A&M AGRILIFE EXTENSION SERVICE - GILLESPIE COUNTY

38 Business Ct. Fredericksburg, Texas 78624

Office Hours: 8:00 a.m. - 5:00 p.m.

Phone: (830) 997-3452

Fax: (830) 997-6378

Email: gillespie-tx@tamu.edu

Website: <http://gillespie.agrilife.org>

Office Personnel:

Jaleigh Vollmar

jaleigh.vollmar@ag.tamu.edu

Donna Maxwell

donna.maxwell@ag.tamu.edu

GILLESPIE COUNTY EXTENSION AGENTS

Brad Roeder is the Ag & Natural Resources (ANR) CEA which encompasses hay production, wildlife management, predator control, farming, pest management, CEU's, livestock production, water conservation, brush management and economic development.

bwroeder@ag.tamu.edu

Beth McMahon is the Horticulture CEA, providing programming and consulting on horticultural topics such as trees & tree health(shade and fruit trees included), lawns & ornamental plantings, plant identification, gardening, plant disease and pest identification and general horticultural crop questions.

elizabeth.mcmahon@ag.tamu.edu

Emily Grant is the 4-H & Youth Development CEA which includes the Gillespie County 4-H program.

Gillespie County 4-H members participate in Showing/Raising Animals, Food & Nutrition, Clothing/Textiles, Photography, Livestock Judging, BB Gun, Archery, Meat Judging, Robotics, Gardening, Entomology, and Horse projects.

emily.grant@ag.tamu.edu

Shea Nebgen is the Family & Community Health (FCH) CEA who provides programming in areas like nutrition, sewing, diabetes, child safety seats, and healthy living.

s-nebgen@tamu.edu

Sydney Jones Boyer is the Assistant Extension Agent for Gillespie County. This includes working with the Ag & Natural Resources Agent, Horticulture Agent, Family & Community Health Agent, and 4-H & Youth Development Agent.

sydney.jones@ag.tamu.edu



TEXAS A&M
AGRILIFE
EXTENSION