

WINTER 2021

AG & NATURAL RESOURCES

GILLESPIE COUNTY

9TH ANNUAL

JACOB KREBS MEMORIAL YOUTH HUNT

JANUARY 14TH-16TH, 2022

"Quality time in a deer blind and a lot more!"



WHERE: Harper, TX (Gillespie County)

WHO: Youth (ages 9-17) children of Wounded and Fallen Warriors or Special Ops

COST: \$150.00 (Covers the cost of meals & insurance for both the youth and adult)
Scholarships are available

SPONSORED BY: The Krebs Family, The Texas Youth Hunting Program, Fredericksburg Salutes Our Wounded Warriors, and the Harper Wildlife Management Association

ABOUT THE HUNT:

This event is to honor our son Jacob who drowned on March 26th, 2013, while training for his Navy S.E.A.L. contract. Jacob had enlisted in the Navy and was about to ship out in June but never made it. Jacob died on April 1st, but his legacy lives on through his organ, tissue, and graft donations, and the many kids he inspired. Jacob loved the outdoors and loved his country. He was very adamant about honoring all soldiers, specifically wounded warriors. We would like to honor them as well by hosting a special youth hunt weekend for their children ages 9-17.

Educational opportunities during the hunt weekend include: Learning about hunter safety and laws; white-tail deer anatomy; how to process game; how to make sausage; enjoying the shooting range; ethical hunting; land and wildlife management; and conservation and stewardship.

FOR MORE INFORMATION CONTACT:

Hunt Master Will Krebs at krebslaser@yahoo.com or 830-669-2860

Apply AT:

<http://texasyouthhunting.com> for More info find us on
Facebook/HarperWMAyouthHuntinMemoryofJacobKrebs

Youth must be accompanied by an adult. Youth must have a valid Hunting License and must have completed Hunter's Education.

UPCOMING EVENTS

*Holiday CEU Program
December 29

*Brush Pile Burning
Workshop
January 11

Plantastic Gardening Seminar
March 4

Grow It Cook It Series
April 2022 - More info to come!

INSIDE THIS ISSUE:

Krebs Youth Hunt - 1

AG Updates - 2

Save The Date/Extras - 3

Horticulture - 4

Beekeeping - 5

GCACA Info - 5

Holiday Schedule/Contact
Info - 6

**Indicates that CEU's will
be offered at event*



2021 Holiday CEU Program

Wednesday, December 29

Registration: 8:00am Program: 8:30am-11:30am

Cost: \$10 No RSVP Needed 3 CEU's - 1 L&R, 1 IPM, & 1 Gen

Please bring your Private Pesticide Applicator's License.

Topics will include feral hogs, brush busters, & picolinic acid.

Cash, Check, or Eventbrite. <https://www.eventbrite.com/e/216281191867>



NO
CHARGE!

Are you interested in brush pile burning?

We have the program just for you:

Brush Pile Burning Workshop with Quail Forever & Gillespie Prescribed Burn Association.

Tuesday, January 11th, 2022

6:00 p.m.

1 IPM
CEU

38 Business Court, Fredericksburg, TX

Please RSVP by January 6th for meal to

donna.maxwell@ag.tamu.edu or 830-997-3452



Gillespie County Wildlife Management Associations

Friendly Reminder:

Harvest Record books are due to the Gillespie County AgriLife Extension Office by February 11, 2022.

Ranchers with MLD's - Books are due by March 11, 2022.



Generation Next: Our Turn To Ranch

The Generation Next curriculum targets new landowners, those who are inheriting land, or those who are looking to start a new agricultural operation on an existing ranch.

Registration for the Spring 2022 class (January 24 - April 17) is now open.

Enrollment will be limited to the first 100 people who register.

<https://generationnext.tamu.edu>



Common Winter Weeds in Pastures & Hay Meadows

Controlling Thistles

Mature thistle in pasture

If left uncontrolled, thick thistle stands can reduce grazing and result in less forage production. A single thistle plant can produce at least **4,000 seeds**, which increases the chance for higher thistle populations in the pasture the following year. Consequently, management practices need to be conducted prior to flower formation for effective thistle control. Even if thistles have not infested your pasture in the past, **it is ideal that your pastures are scouted in late fall through mid-spring (November to March)** to ensure that thistles do not get out of control. New infestations are easier to manage than large-scale populations.

Although there are several different species of thistle in Texas, most are closely related and control recommendations will not differ.

Best time to control with a herbicide is when thistles are in the rosette stage. The rosette stage is when the thistle forms a low-growing ring of leaves. As they mature they are harder to control and may require higher rates of herbicide to have effective control.



Publications - Forage Fax (tamu.edu)



**MORE INFO
HERE!**



Upcoming Stock Show Dates

Harper Community Livestock Show

Harper, TX

December 18, 2021

Gillespie County Youth Livestock Show

Fredericksburg, TX

January 5th - 8th, 2022

Hill District Grandstand Show

January 14th - 21st, 2022

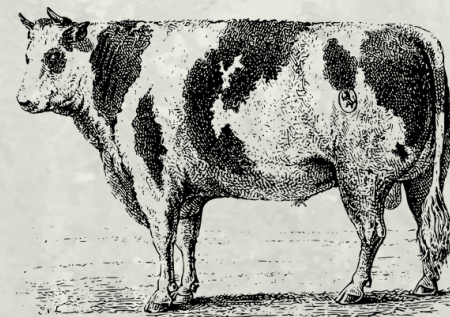
Brand Registrations for Gillespie County

Brand Registrations began the process of renewals on Tuesday, August 31, 2021.

You will have until Monday, February 28, 2022 to renew your registration.

For more information, please visit:

<https://www.gillespiecounty.org/page/article/555>



HORTICULTURE

Contact Beth McMahon
for more information.
830-997-3452

Save The Date!

Plantastic Gardening Seminar

March 4th, 2022

More details to come.



Grow It Cook It Series

2022

Eggplant - April

Okra - May

Strawberries - September

Come learn not just how to grow
these fruits & vegetables,
but different ways to cook them
too!

To plant a garden is to
believe in tomorrow.

-AUDREY HEPBURN





Did you know:

If you own between 5 and 20 acres & are interested in raising bees, you may qualify for an ag exemption?

Take the course & learn what it takes to become a beekeeper in Texas!

Beekeeping 101 (tamu.edu)

GILLESPIE COUNTY AGRICULTURAL COMMODITY ASSOCIATION

The primary objective of the GCACA is to control predators (coyotes, red fox, bobcats, and feral hogs) to protect domestic animals, desirable wildlife and birds, prevent damage to field crops, eliminate the outbreak of diseases associated with controlled predators, & reduce pollution of the county's water resources.

Who can become a member?

Landowners in Gillespie County or anyone wanting to support the objectives of the GCACA.

Yearly dues are 20 cents an acre or a minimum of \$75.00, whichever is greater.

Predator (coyotes, red fox, bobcats, and feral hogs) tails will only be accepted on the 2nd & 4th Wednesdays of each month.

~38 Business Court~

Fredericksburg, TX

Time: 11:00am - 1:30pm

To apply for a membership, please come by the Extension Office & pick up a membership form.



OFFICE INFORMATION

Please Note!

Our office will be closed on the following dates:

- Friday, Dec. 24 & Monday, Dec. 27 - Christmas
- Friday, Dec. 31 - New Year's Eve
- Monday, Jan. 17 - MLK Day

**HAPPY
HOLIDAYS!**

GILLESPIE COUNTY EXTENSION AGENTS

**38 Business Court
Fredericksburg, TX 78624**

Phone: 830-997-3452

Fax: 830-997-6378

Email: gillespie-tx@tamu.edu

Website: <http://gillespie.agrilife.org>

Brad Roeder is the Ag & Natural Resources (ANR) Agent which encompasses hay production, wildlife management, predator control, farming, pest management, CEU's, livestock production, water conservation, brush management, and economic development. bwroeder@ag.tamu.edu

Beth McMahon is the Horticulture Agent who works alongside Gillespie County residents and business owners with plant and pest related inquiries. elizabeth.mcmahon@agnet.tamu.edu

Shea Nebgen is the Family and Community Health (FCH) Agent who provides programming in areas like nutrition, sewing, food safety, child safety seats, and healthy living. s-nebgen@tamu.edu

Emily Grant is the 4-H & Youth Development CEA which includes the Gillespie County 4-H program. Gillespie County 4-H members participate in showing/raising animals, food & nutrition, clothing/textiles, photography, livestock judging, BB Gun, archery, meat judging, robotics, gardening, entomology, and horse projects. emily.grant@ag.tamu.edu

Sydney Jones Boyer is the Assistant Extension Agent for Gillespie County. This includes working with the Ag & Natural Resources Agent, Horticulture Agent, Family & Community Health Agent, and 4-H & Youth Development Agent. sydney.jones@ag.tamu.edu

Office Personnel:

Jaleigh Vollmar

jaleigh.vollmar@ag.tamu.edu

Donna Maxwell

donna.maxwell@ag.tamu.edu

Publication by Donna Maxwell.

(If you wish to be removed, please send her an email.)



<https://www.facebook.com/gillespietext>



https://twitter.com/Gillespie_Exten